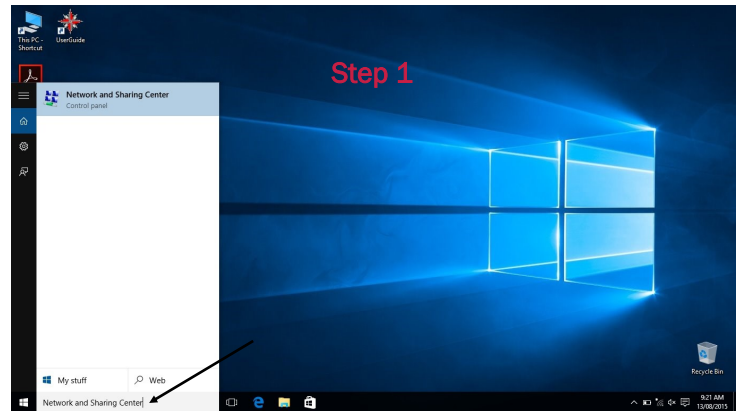
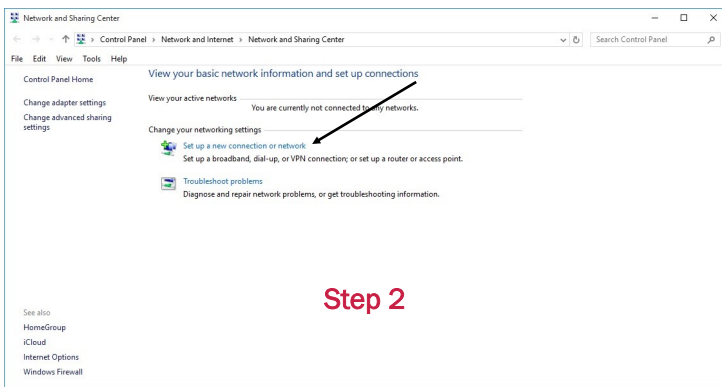


Getting Started

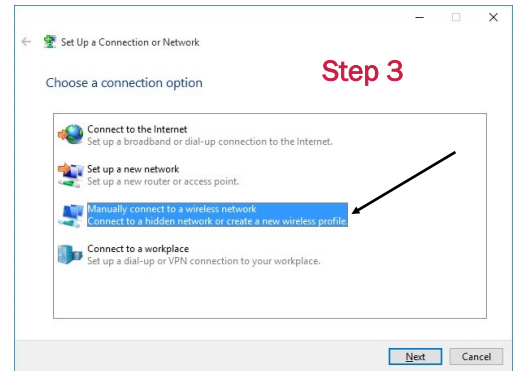
Windows 10 Wireless Guide

Step 1: In the Windows Search Box type 'Network and Sharing Center'. Then click on the option that comes up.

Step 2: Click on 'Set up a new connection or network'.

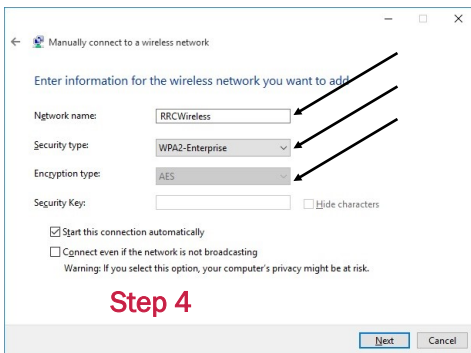


Step 3: Select 'Manually connect to a wireless network'. Click 'Next'.



Step 4: Enter the following information:

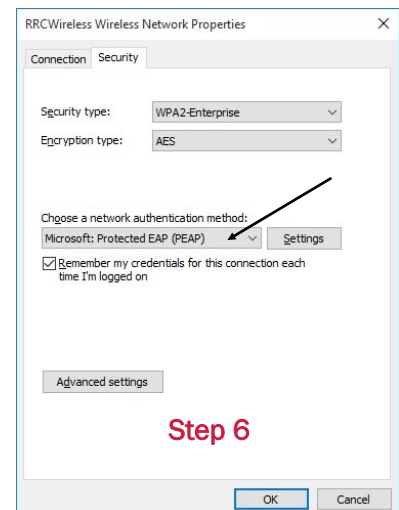
- Set 'Network Name' to 'RRCWireless'. (case sensitive)
- Set 'Security Type' to 'WPA2-Enterprise'.
- Set 'Encryption Type' to 'AES'.
- Click 'Next'.

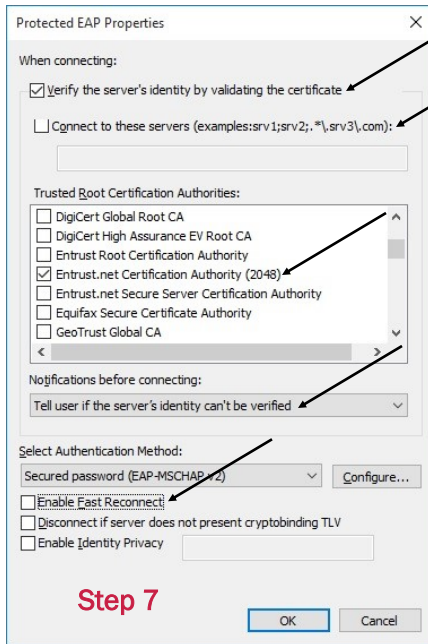


Step 5: Click on 'Change connection settings'.

Step 6: Follow these steps:

- Click on the 'Security' tab.
- Ensure the 'Choose a network authentication method' is set to 'Microsoft Protected EAP (PEAP)'.
- Click on the 'Settings' button.



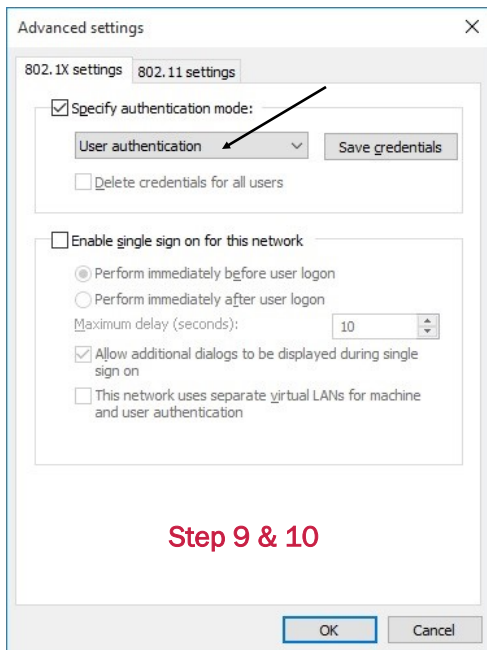
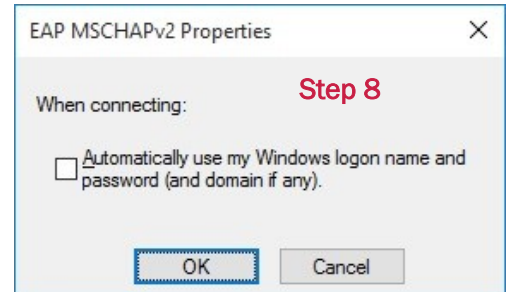


Step 7: Follow these steps:

- Check: 'Verify the server's identity by validating the certificate'.
- Uncheck: 'Connect to these servers (examples: srv1; srv2; *.srv3.com)'.
- Scroll down the list and check: 'Entrust.net Certification Authority (2048)'.
- Ensure that: 'Tell user if the server name or root certificate isn't specified' is selected.
- Uncheck: 'Enable Fast Reconnect'.
- Click the 'Configure' button.

Please note: If you do not have 'Entrust.net Certification Authority (2048)', uncheck 'Verify the server's identity by validating the certificate'.

Step 8: Uncheck 'Automatically use my Windows logon name and password (and domain if any)'. Press 'OK' and then 'OK' again.



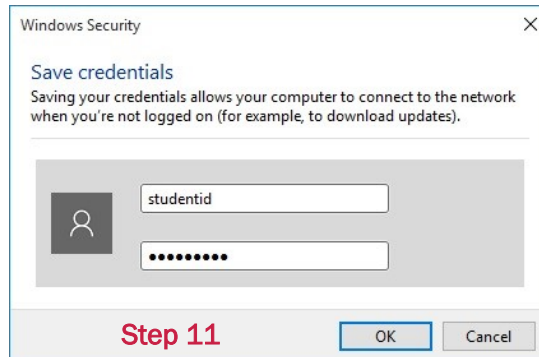
Step 9: Click the 'Advanced Settings' button.

Step 10: Follow these steps:

- Check the 'Specify authentication mode'.
- Select 'User authentication'.
- Click the 'Save (or Replace) credentials' button.

Step 11: Enter your User name and Password.

Click 'OK' and then 'OK' again.



Please note: Use the same User name and password that you use to access the Red River College network.

Step 12: Click the 'OK' button. Click the 'OK' button. Click the 'Close' button.