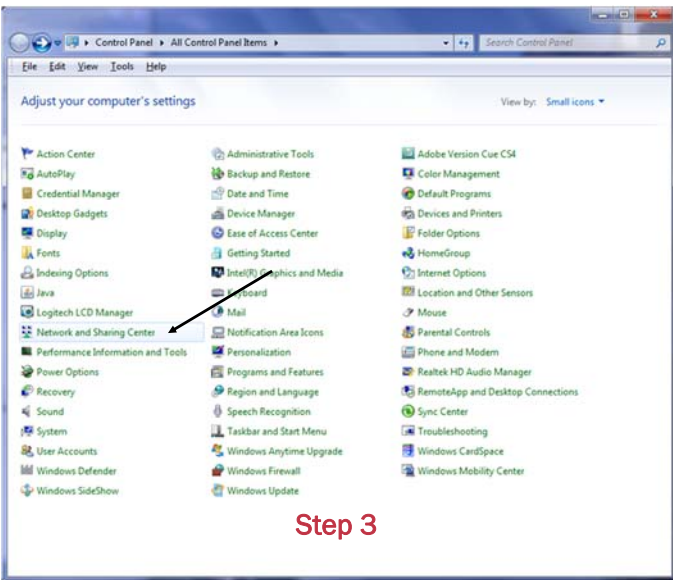


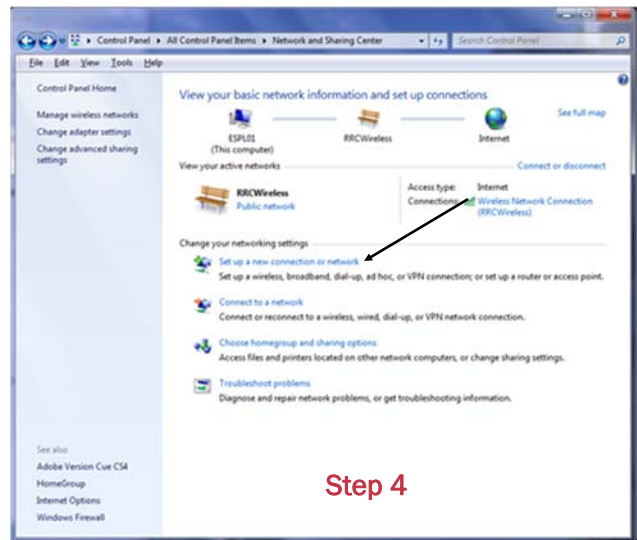
# Getting Started

## Windows 7 Wireless Guide

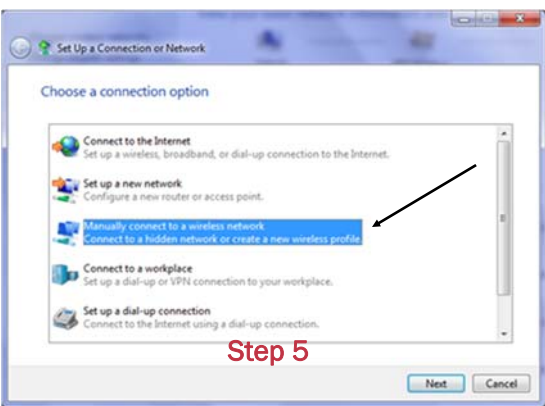
- Step 1:** Open the 'START' menu.
- Step 2:** Click on 'Control Panel'.
- Step 3:** Double click on 'Network and Sharing Center'.



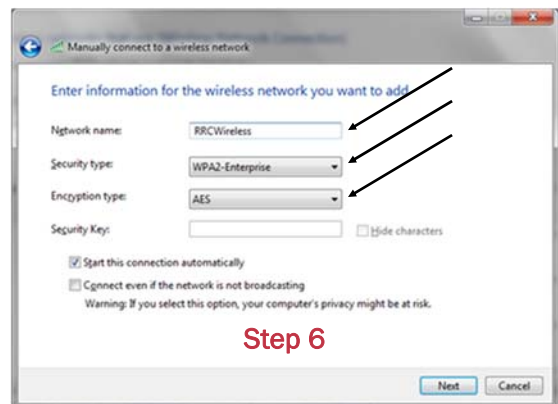
- Step 4:** Click on 'Set up a new connection or network'.



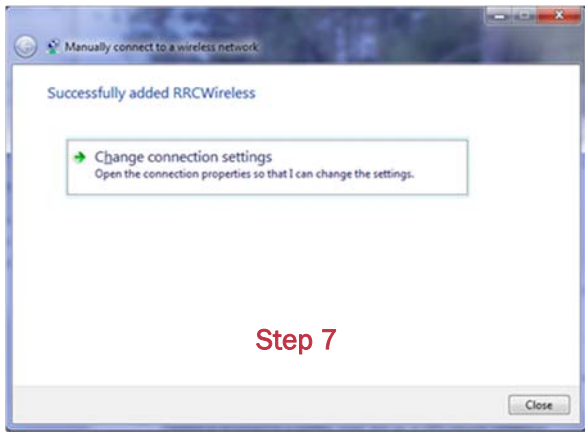
- Step 5:** Click on 'Manually connect to a wireless network'. Click 'Next'.



- Step 6:** Enter the following information:
  - a. Set 'Network Name' to 'RRCWireless'. (case sensitive)
  - b. Set 'Security Type' to 'WPA2-Enterprise'.
  - c. Set 'Encryption Type' to 'AES'.
  - d. Click 'Next'.

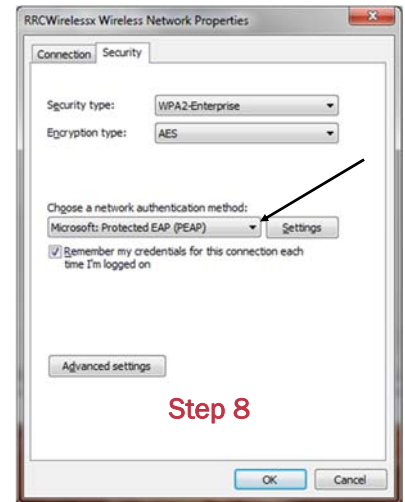


**Step 7:** Click on 'Change connection settings'.



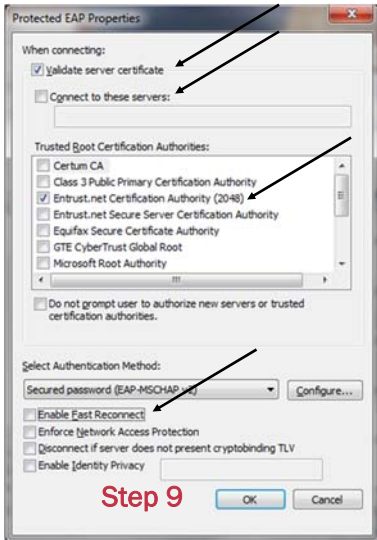
**Step 8:** Follow these steps:

- Click on the 'Security' tab.
- Ensure the 'Choose a network authentication method' is set to 'Microsoft Protected EAP (PEAP)'.
- Click on the 'Settings' button.



**Step 9:** Follow these steps:

- Check: 'Verify the server's identity by validating the certificate'.
- Uncheck: 'Connect to these servers (examples: srv1; srv2;.\*\srv3\com)'.
- Scroll down the list and check: 'Entrust.net Certification Authority (2048)'.
- Uncheck: 'Enable Fast Reconnect'.
- Click the 'Configure' button.



**Please note:** If you do not have 'Entrust.net Certification Authority (2048)', uncheck 'Verify the server's identity by validating the certificate'.

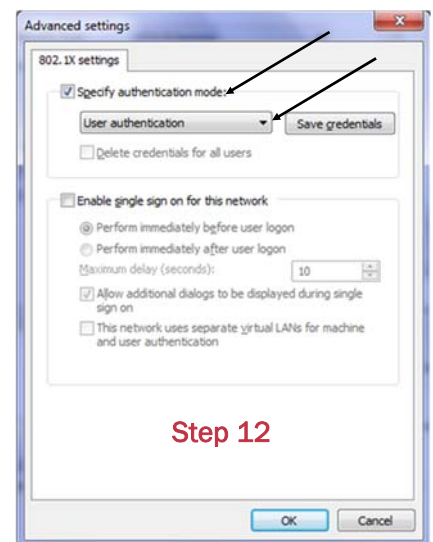
**Step 10:** Uncheck 'Automatically use my Windows logon name and password (and domain if any)'. Click 'OK' and then 'OK' again.



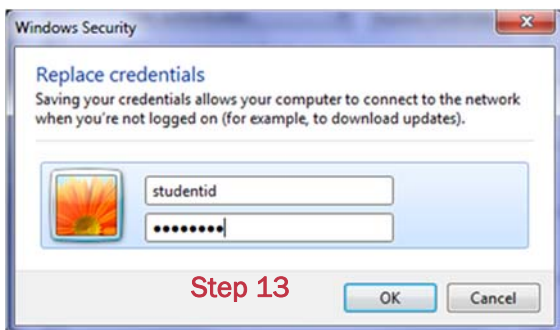
**Step 11:** Click on the 'Advanced settings button'

**Step 12:** Follow these steps:

- Check the 'Specify authentication mode'.
- Select "User Authentication".
- Click the 'Save credentials' button.



**Step 13:** Enter your User name and Password. Click 'OK' and then 'OK' again.



**Please note:** Use the same User name and password that you use to access the Red River College network.

**Step 15:** Click the 'OK' button. Click the 'OK' button. Click the 'Close' button.