

# Getting Started

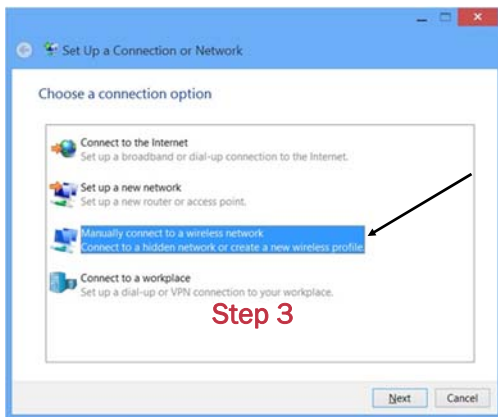
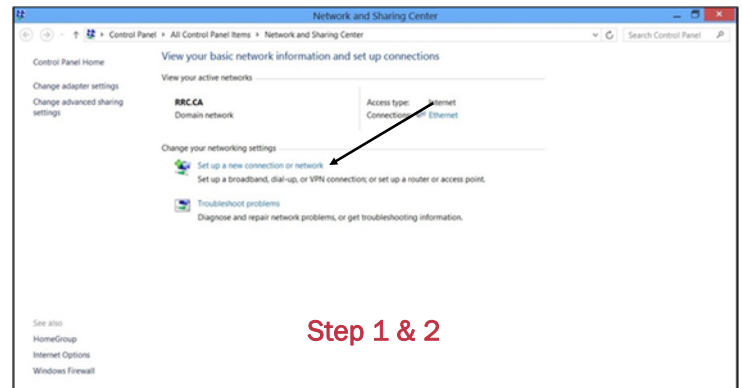
## Windows 8 Wireless Guide

**Step 1:** Search for 'Network and Sharing Center'.

**Please note:** You may need to search under 'Settings'.

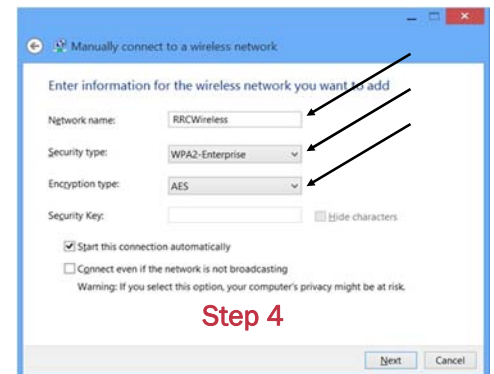
**Step 2:** Click on 'Set up a new connection or network'.

**Step 3:** Select 'Manually connect to a wireless network'.  
Click 'Next'.



**Step 4:** Enter the following information:

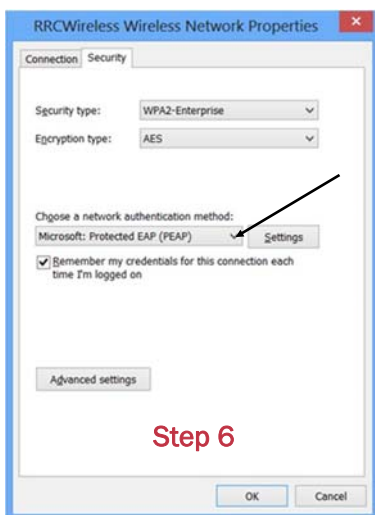
- Set 'Network Name' to 'RRCWireless'. (case sensitive)
- Set 'Security Type' to 'WPA2-Enterprise'.
- Set 'Encryption Type' to 'AES'.
- Click 'Next'.

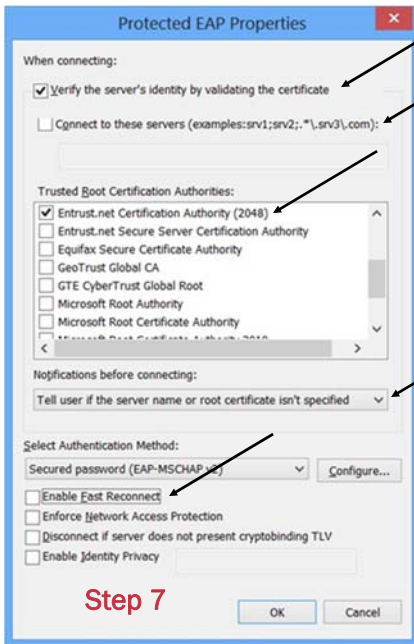


**Step 5:** Click on 'Change connection settings'.

**Step 6:** Follow these steps:

- Click on the 'Security' tab.
- Ensure the 'Choose a network authentication method' is set to 'Microsoft Protected EAP (PEAP)'.
- Click on the 'Settings' button.



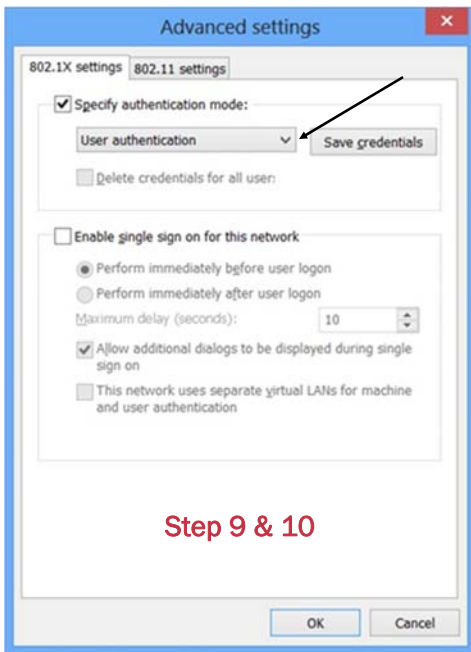
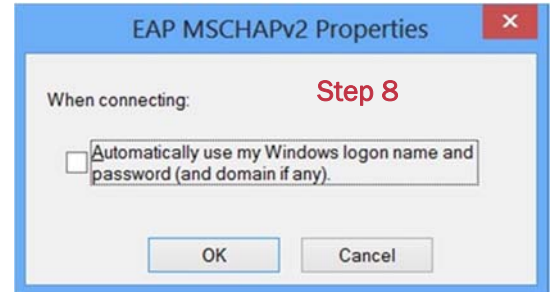


**Step 7:** Follow these steps:

- Check: 'Verify the server's identity by validating the certificate'.
- Uncheck: 'Connect to these servers (examples:svr1;svr2;.\*\svr3\com)'.
- Scroll down the list and check: 'Entrust.net Certification Authority (2048)'.
- Ensure that: 'Tell user if the server name or root certificate isn't specified' is selected.
- Uncheck: 'Enable Fast Reconnect'.
- Click the 'Configure' button.

**Please note:** If you do not have 'Entrust.net Certification Authority (2048)', uncheck 'Verify the server's identity by validating the certificate'.

**Step 8:** Uncheck 'Automatically use my Windows logon name and password (and domain if any)'. Press 'OK' and then 'OK' again.



**Step 9:** Click the 'Advanced Settings' button.

**Step 10:** Follow these steps:

- Check the 'Specify authentication mode'.
- Select 'User authentication'.
- Click the 'Save (or Replace) credentials' button.

**Step 11:** Enter your User name and Password. Click 'OK' and then 'OK' again.



**Please note:** Use the same User name and password that you use to access the Red River College network.

**Step 12:** Click the 'OK' button. Click the 'OK' button. Click the 'Close' button.