

# Getting Started

## Windows Vista Wireless Guide

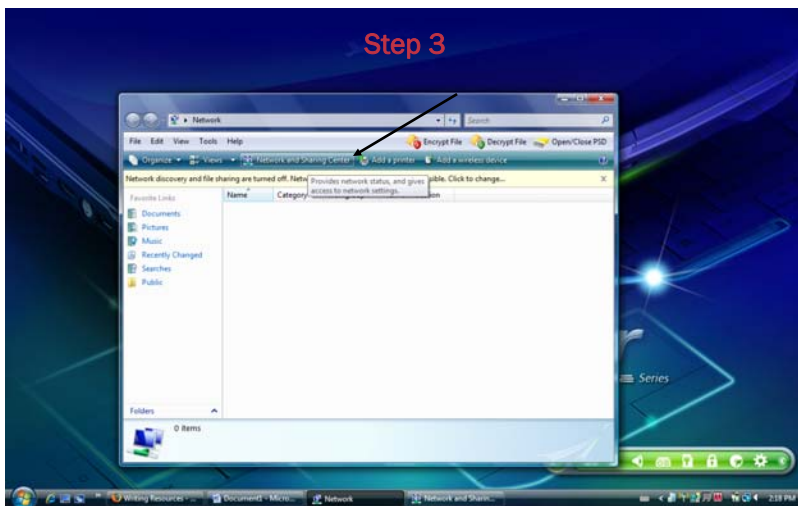
**Step 1:** Open the 'Start' menu.

**Step 2:** Right click on 'Network'.

**Step 3:** Select 'Network and Sharing Center'.

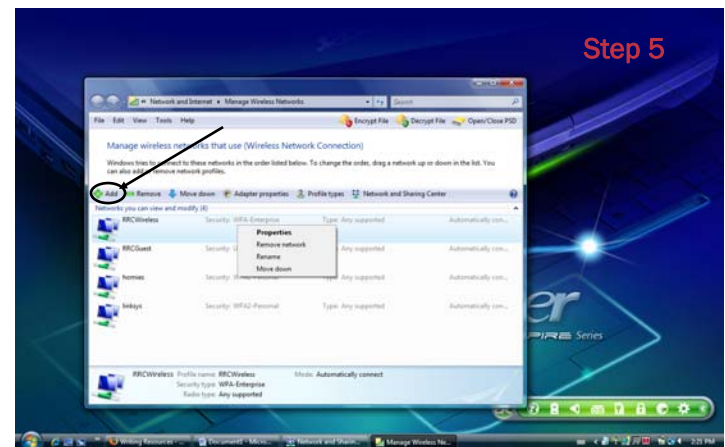


**Step 1 & 2**



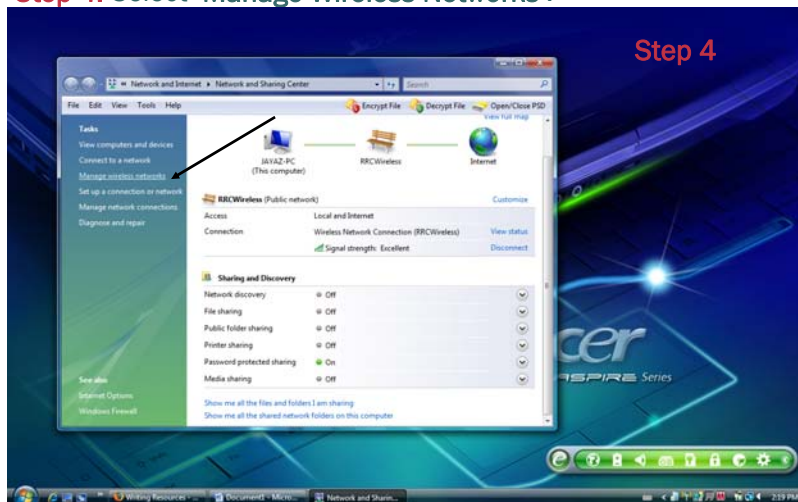
**Step 3**

**Step 5:** Click on the 'Add' button'.



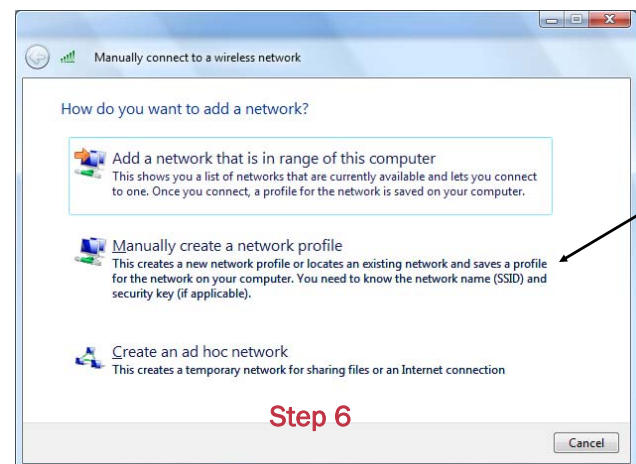
**Step 5**

**Step 4:** Select 'Manage Wireless Networks'.



**Step 4**

**Step 6:** Click on 'Manually connect to a wireless network'.  
Click 'Next'.

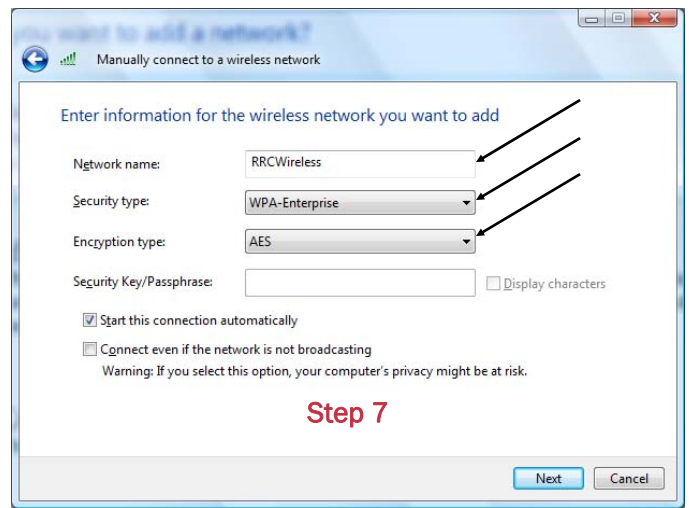


**Step 6**

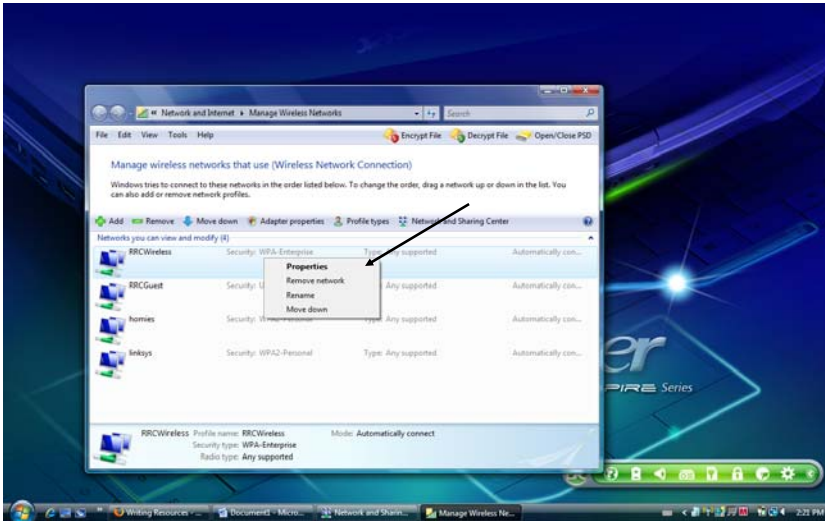
- Step 7:** Enter the following information:
- Set 'Network Name' to 'RRCWireless'. (case sensitive)
  - Set 'Security Type' to 'WPA-Enterprise'.
  - Set 'Encryption Type' to 'AES'.
  - Click 'Next'.

**Step 8:** Once you click the 'Next' button a connection attempt will be made. It will probably not succeed and you will be prompted to enter additional wireless properties or information.

**Step 9:** You must now set up some security settings. Right click on the 'RRCWireless' connection and select 'Properties'.

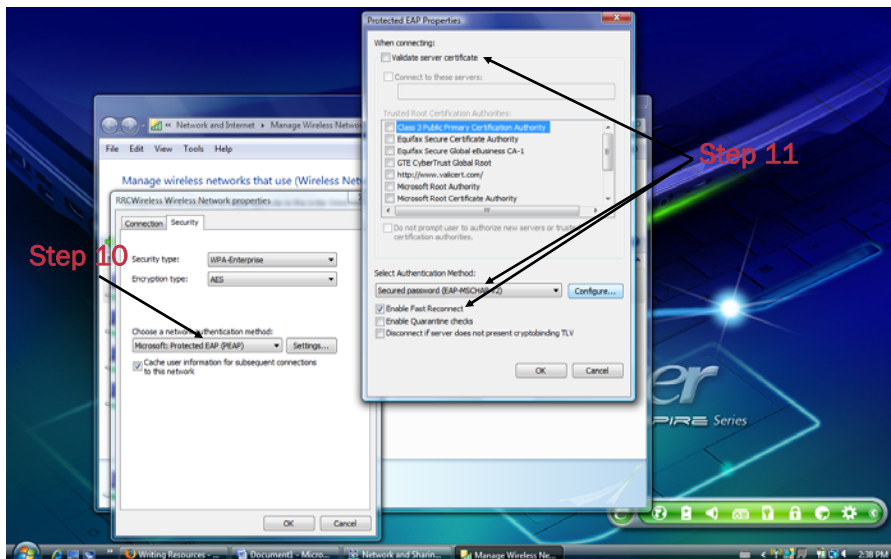


**Step 7**



**Step 10:** Ensure the 'Choose a network authentication method' is set to 'Microsoft Protected EAP (PEAP)'.

**Step 11:** Click on the 'Settings' button and UNCHECK 'Validate server certificate'. Then go to 'Authentication method' and choose 'Secured password (EAP-MSCHAPv2)'. Make sure to UNCHECK 'Enable Fast Connect'. Click the 'Configure' button.



**Step 10**

**Step 11**

**Step 12:** Uncheck 'Automatically use my Windows logon name and password (and domain if any)'. Click 'OK', then click 'OK' again, and click 'OK' one last time.



**Step 12**

**Step 13:** You will then be required to provide user name, password, and domain name. The user name and password are the same as the ones you use to access the network. The domain name is 'Academic'.