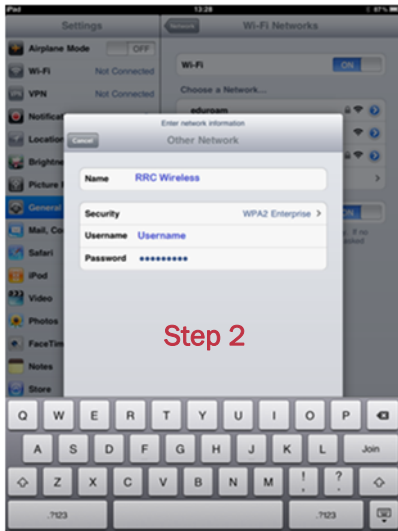


# Getting Started

## iPhone/iPad/iPod Wireless Guide

**Step 1:** Click the 'Settings' icon. 

- Step 2:** Follow these steps:
- Select 'Wi-Fi'.
  - Select 'RRCWireless'.
  - Type your RRC Username beside the Username field.
  - Type your RRC Password beside the Password field.
  - Click the 'Join' button.



**Step 3:** Wait for a check-mark to appear to the left of 'RRCWireless'.

### If you get an error message


Follow these steps:

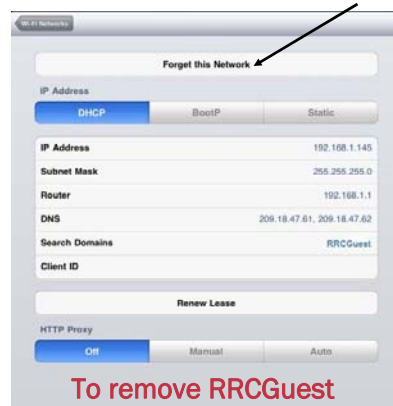
- Click the "Dismiss" button
- Click "Join" button again (it will try to re-connect using different security)

**Keep getting disconnected while walking around the campus.**

'RRCGuest' is an account for vendors and visitors, and has a specific username and password that is entered in a browser. **Your RRC user account will not allow you to log into RRCGuest.** iPhones, iPods and iPads attempt to automatically connect you to 'RRCGuest', as it looks like an open network. If you're walking through Red River College, and 'RRCGuest' has a stronger signal than 'RRCWireless', if your i-device has 'RRCGuest' remembered, it will automatically try to switch over to it.

### To remove RRCGuest:

- Access your WiFi Settings 
- Click on the blue arrow symbol beside 'RRCGuest'.
- Click the 'Forget Network' button



**To remove RRCGuest**