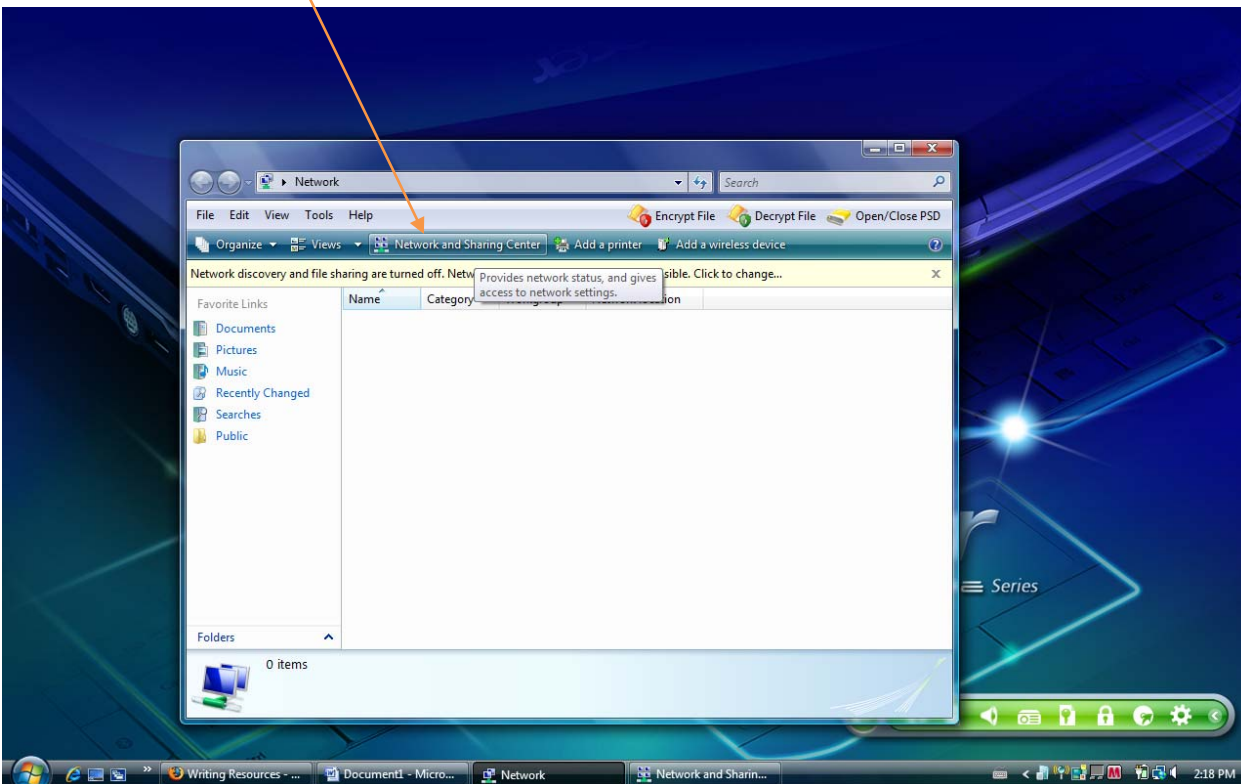


**Step 1: Open the *Start* menu.**

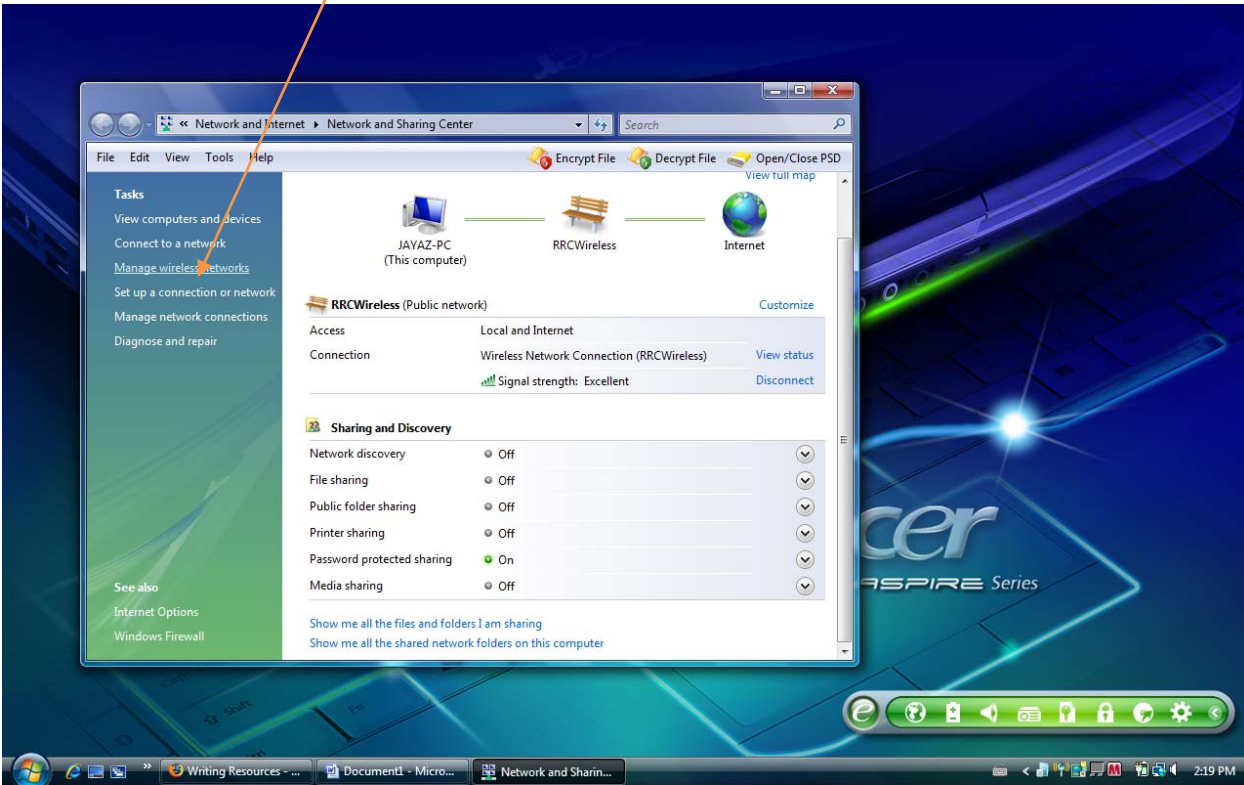
**Step 2: Right click on *Network***



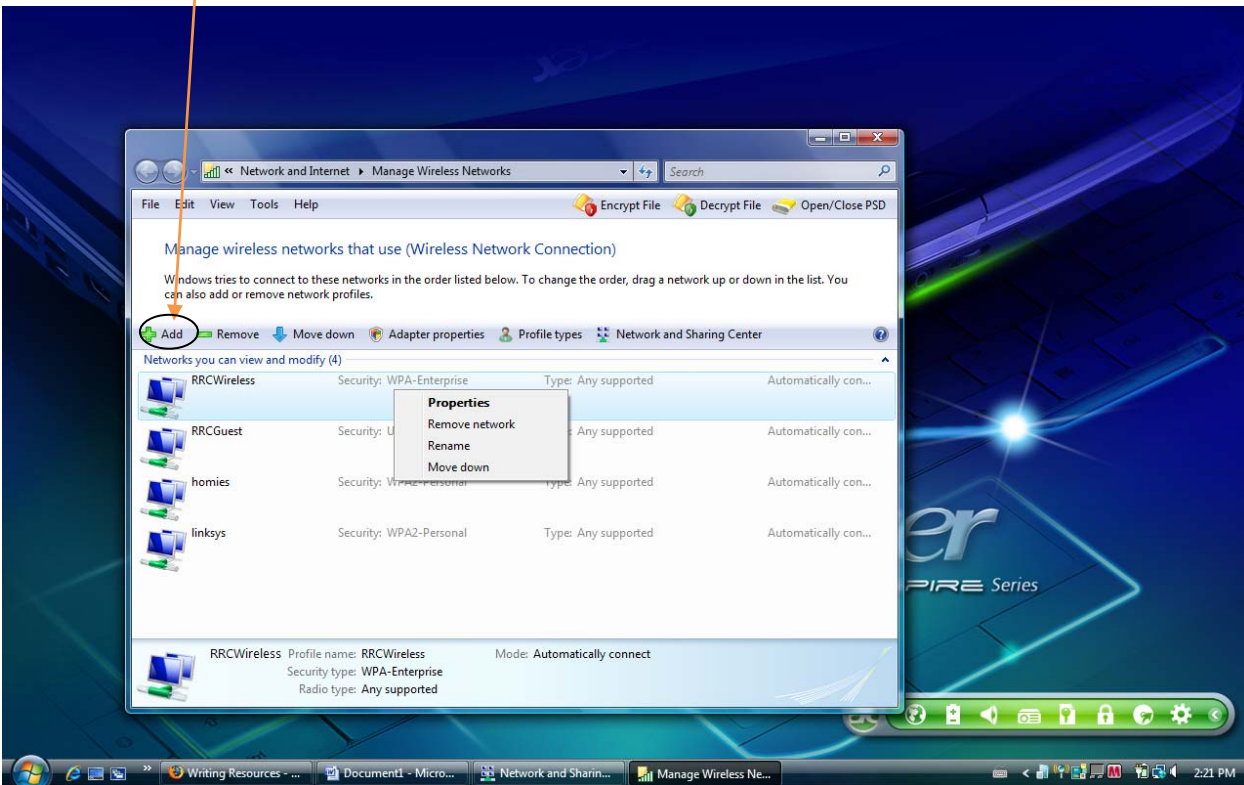
**Step 3: Select *Network and Sharing center***



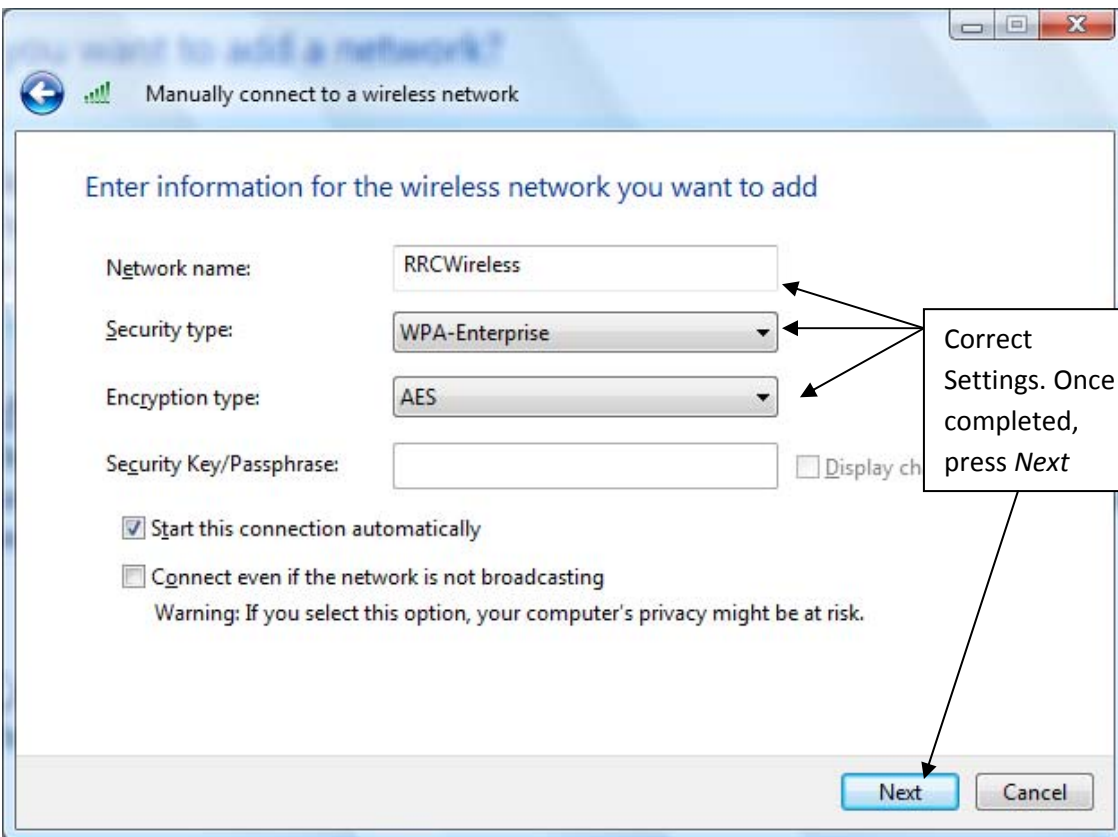
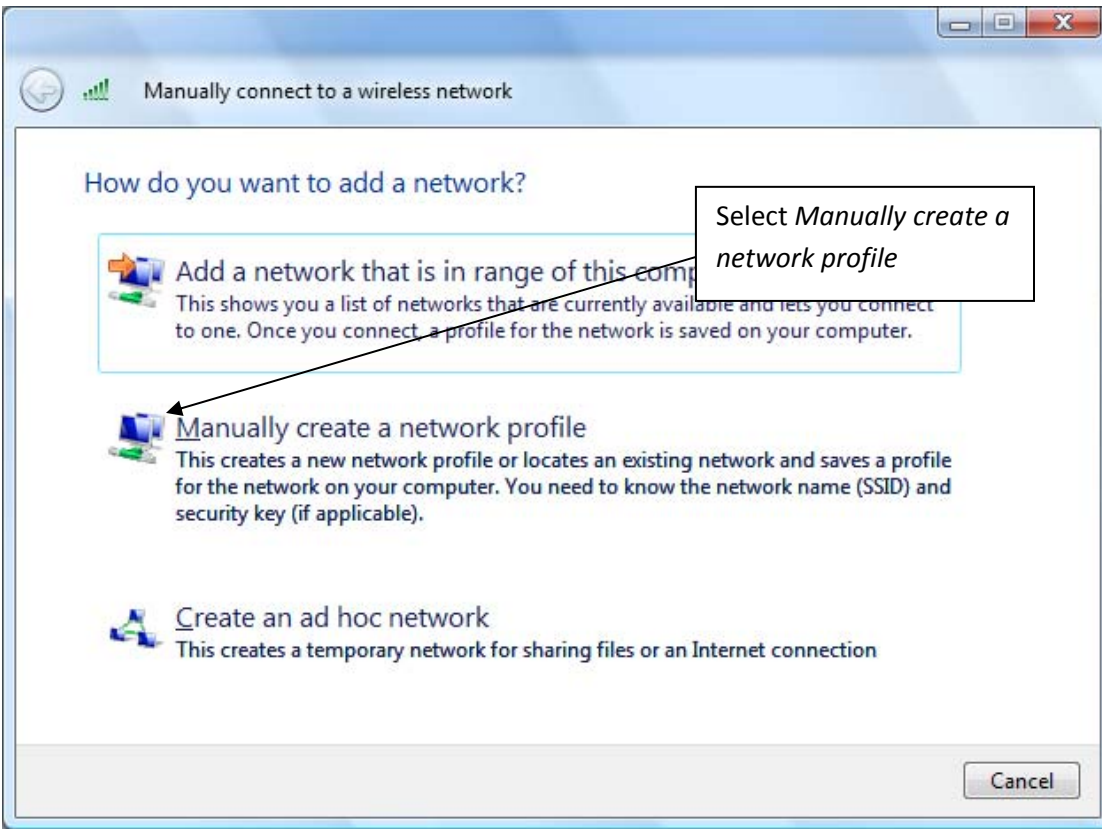
## Step 4: Select Manage Wireless Networks



## Step 5: Click on the Add button



Steps 6 and 7

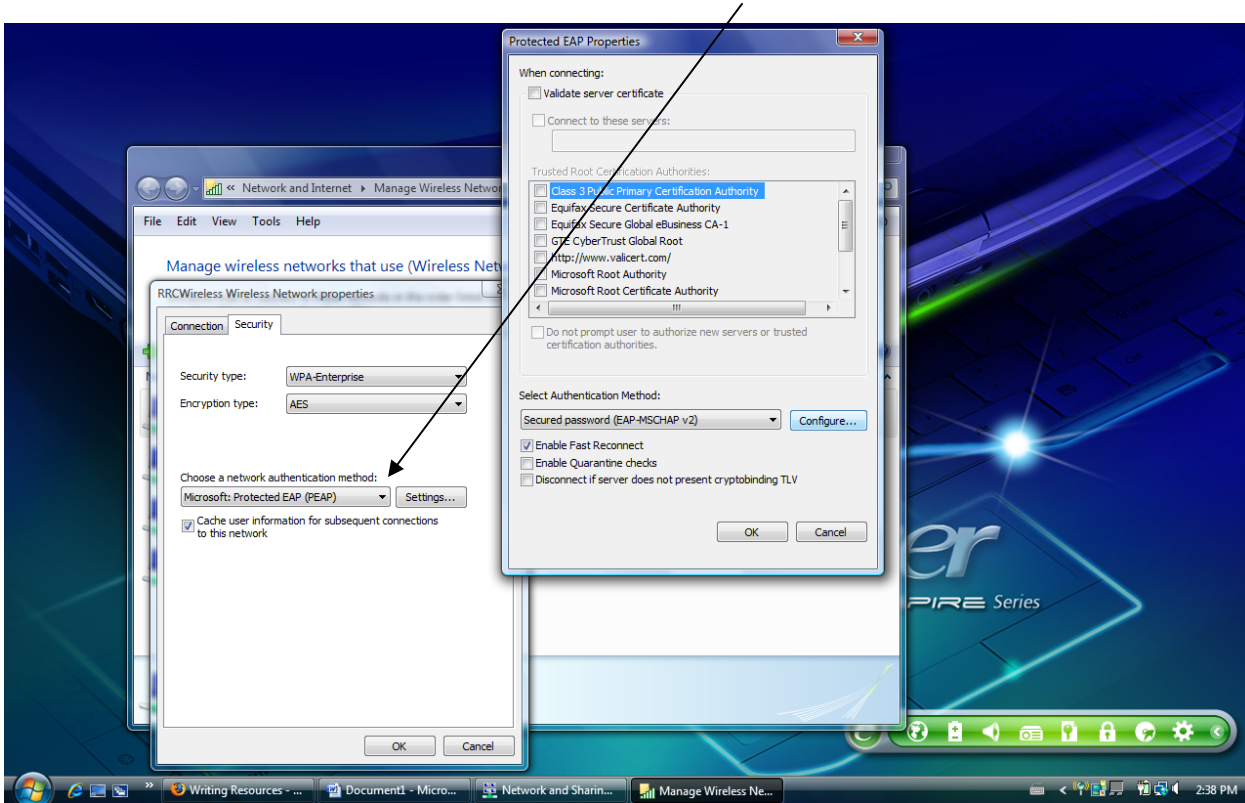


**Step 8:** Once you click the Next button a connection attempt will be made. It will probably not succeed and you will be prompted to enter additional properties or information

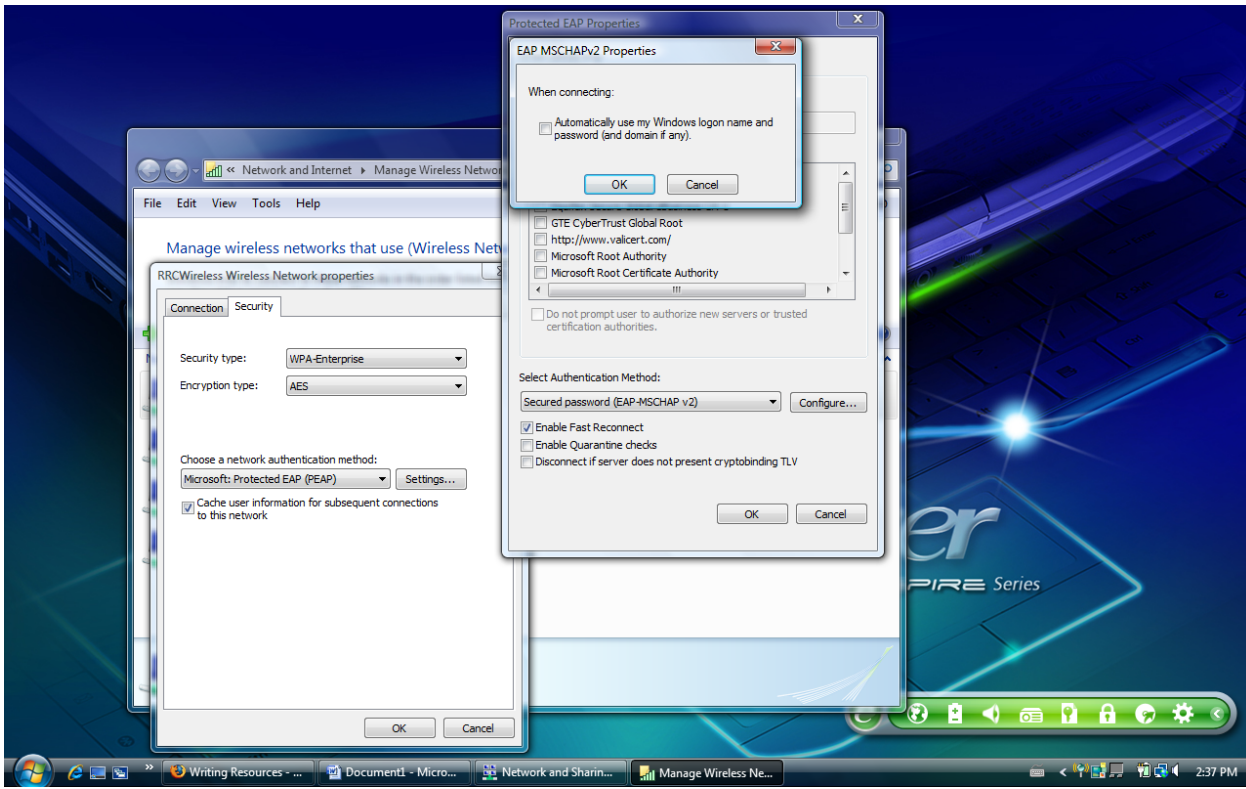
**Step 9:** You must now set up some security settings. Right click on the RRCWireless connection and select Properties

**Step 10** Choose Network authentication method. Microsoft: Protected EAP (PEAP)

**Step 11** Click on settings and UNCHECK "Validate server certificate". Then go to "Authentication method" and choose "Secured password (EAP-MSCHV1)". Remove check mark from Enable fast connect



**Step 12:** Select the “Configure” button right beside “Secured password (EAP-MSCHAPv2)” and UNCHECK the box and say ok.



**Step 13:** You will then be required to provide user name, password, and domain name. The user name and password are the same as the ones you use to access the network. The domain name is *Academic*

## TROUBLESHOOTING

If you have followed these procedures exactly and you still cannot connect, turn Wireless off and then turn it back on. Once you have done that, remove the RRCWireless you created and repeat all the steps.

Firewalls can prevent you from connecting to Wireless.

There are many number of hardware/software configurations on your laptop that can prevent you from accessing Wireless.