

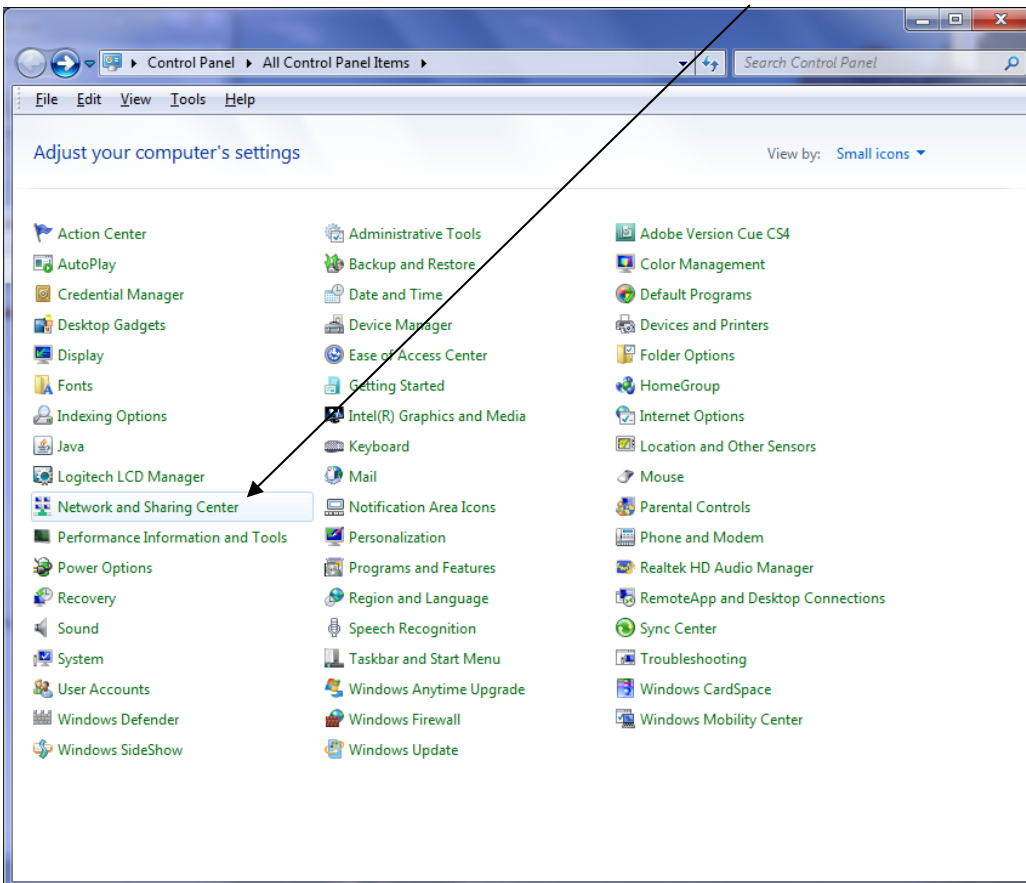
*Windows 7
Wireless Connectivity Guide
Version 2.0*

Step 1: Open the *START* menu.

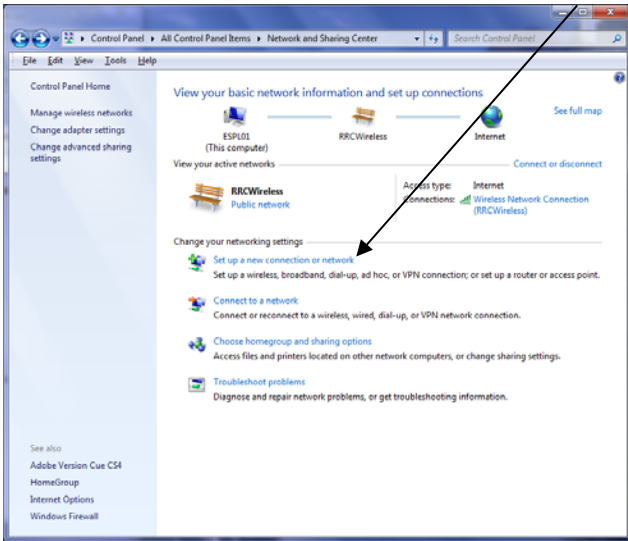
Step 2: Click on *Control Panel*.



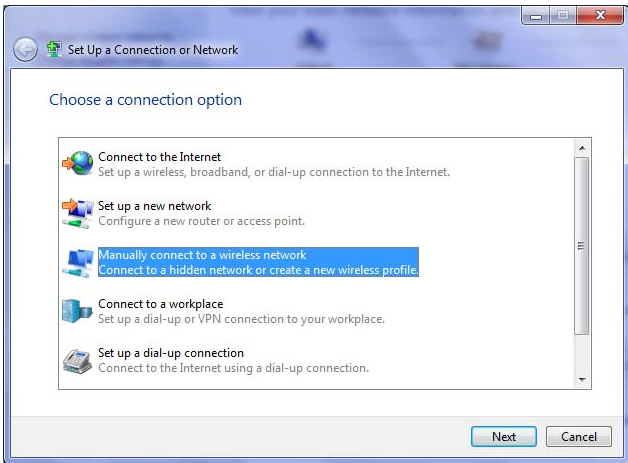
Step 3: Double-click on *Network and Sharing Center*.



Step 4: Click on *Set up a new connection or network*.



Step 5: Click on *Manually connect to a wireless network* and click *Next*.

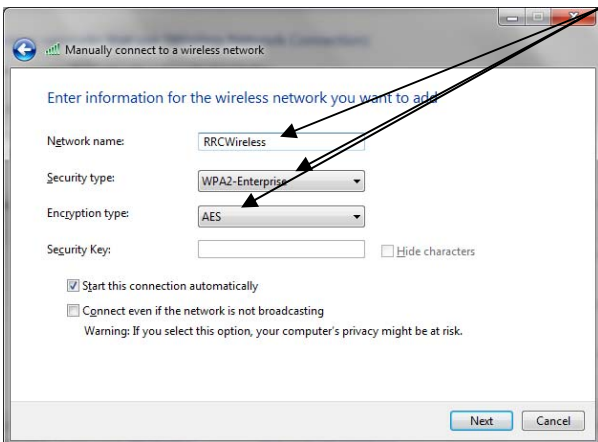


Step 6: Ensure name is set to "RRCWireless" (case sensitive)

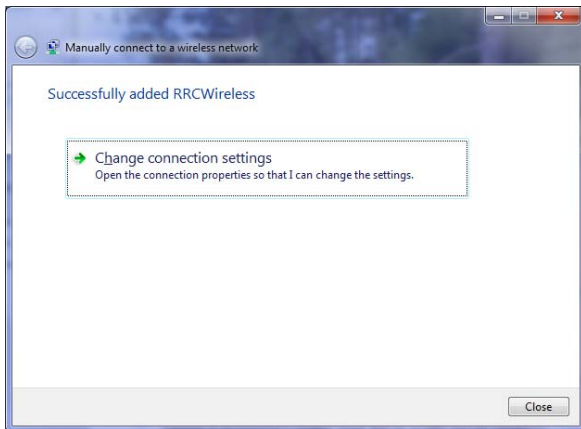
Ensure security type is set to "WPA2-Enterprise"

Ensure encryption type is set to "AES"

Click *Next*.



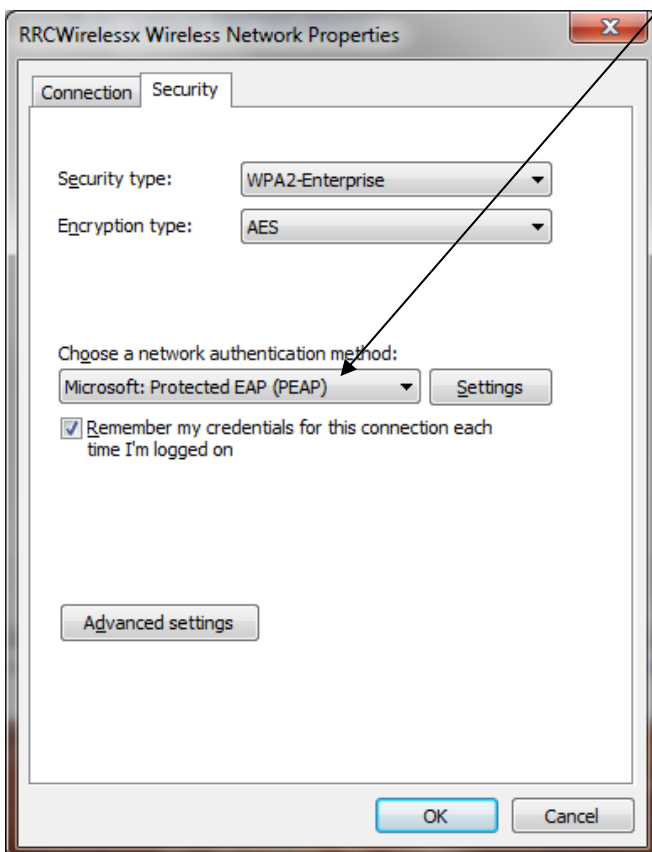
Step 7: Click on *Change connection settings*.



Step 8: Click on the *Security* tab

Ensure the Choose a network authentication method is set to “*Microsoft: Protected EAP (PEAP)*”

Click on the *Settings* button.



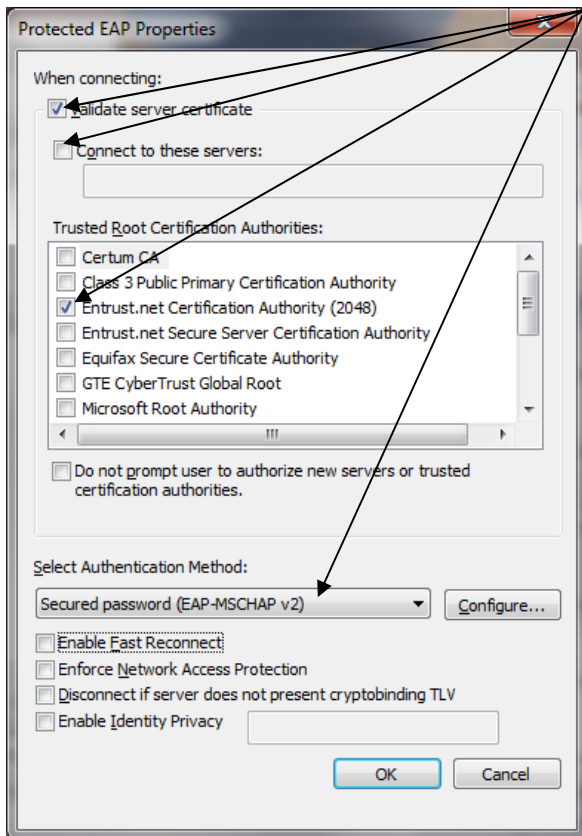
Step 9: CHECK *Validate server certificate*

UNCHECK *Connect to these servers:*

CHECK "Entrust.net Certification Authority (2048)"

UNCHECK *Enable fast reconnect*

Click the *Configure* button.



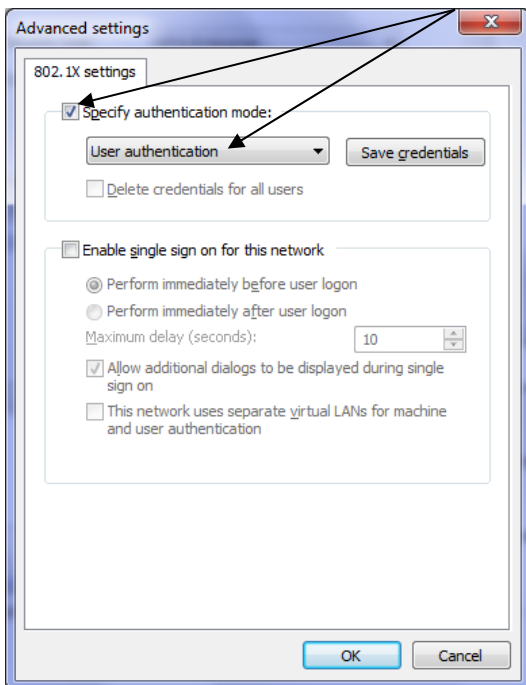
Step 10: Ensure "Automatically use my Windows logon name and password (and domain if any)" is unchecked

Click *OK*.

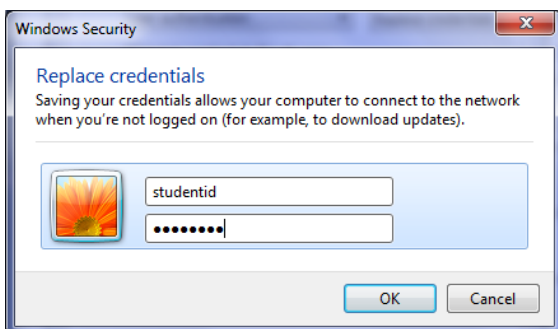


Step 12: Click on the *Advanced settings* button.

Step 13: CHECK the *Specify authentication mode*
Select “User Authentication”
Click the *Save credentials* button.



Step 14: In the *User name* field enter your username
In the *Password* field enter your password
Note that your username and password are the same ones you use to access the RRC network.



Step 15: Click the *OK* button
Click the *OK* button
Click the *Close* button.