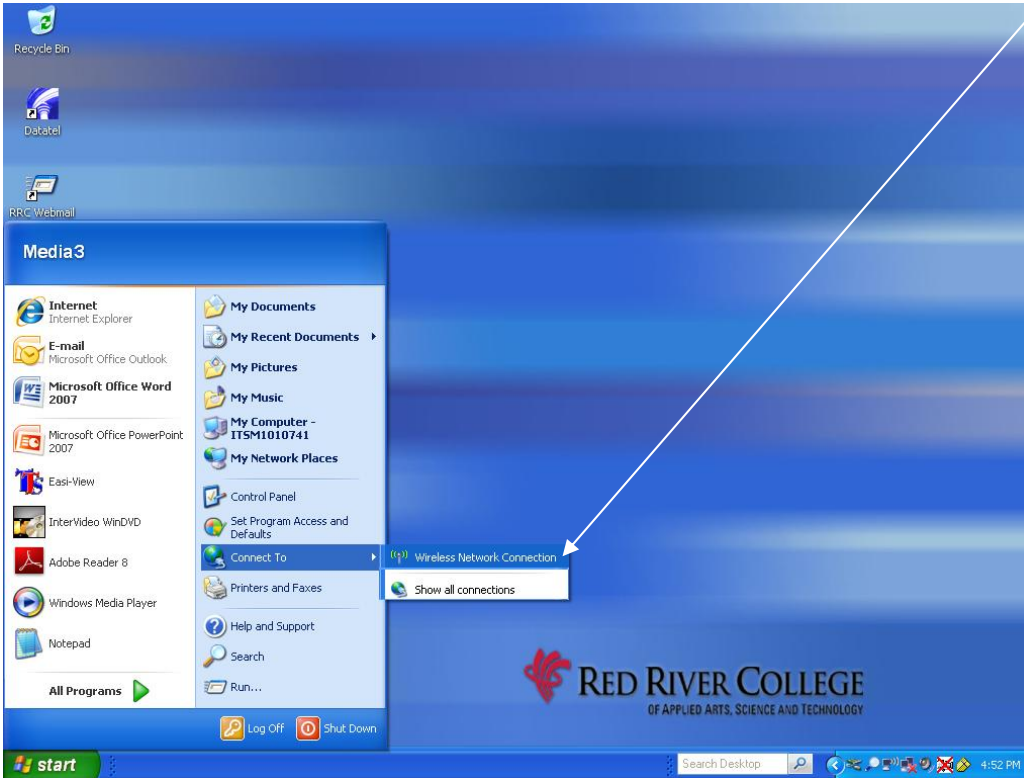


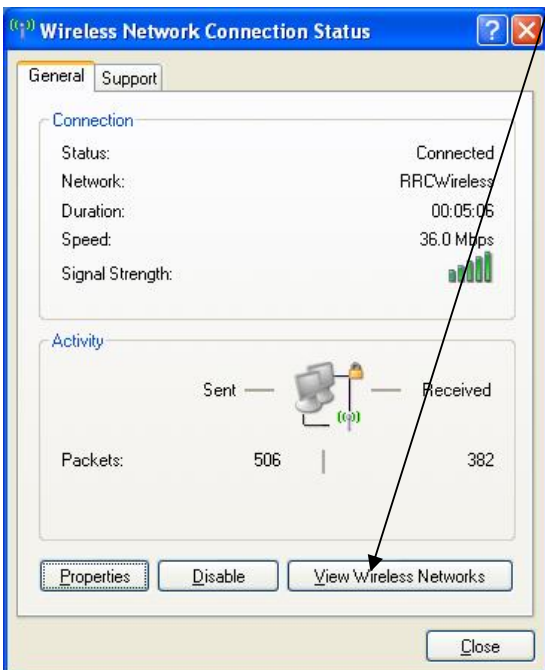
Windows XP
Wireless Connectivity Guide
Version 1.0

Step 1: Open the *START* menu.

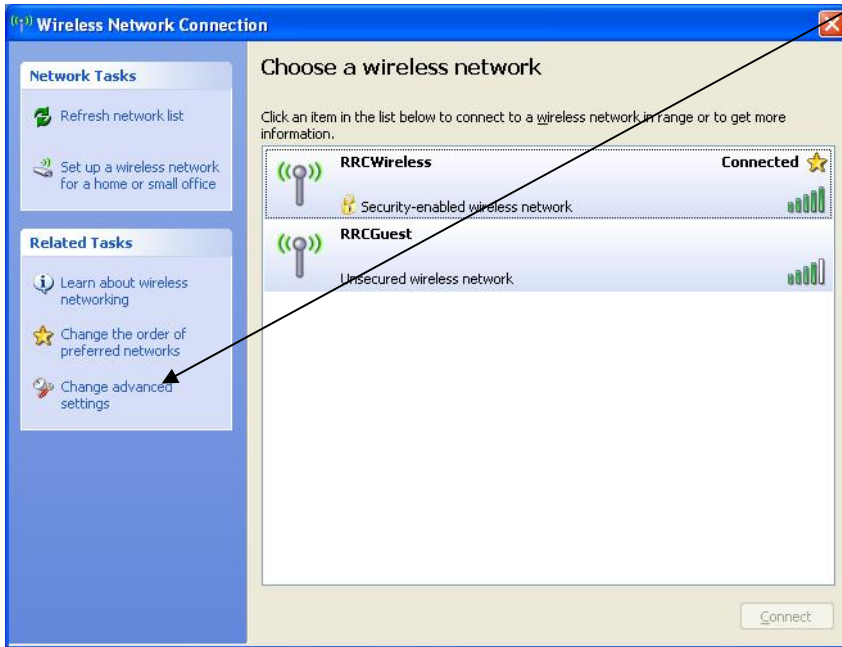
Step 2: Click on *Connect To*
Click on *Wireless Network Connection*.



Step 3: Click on *View Wireless Networks*.



Step 4: Click on *Change advanced settings*.

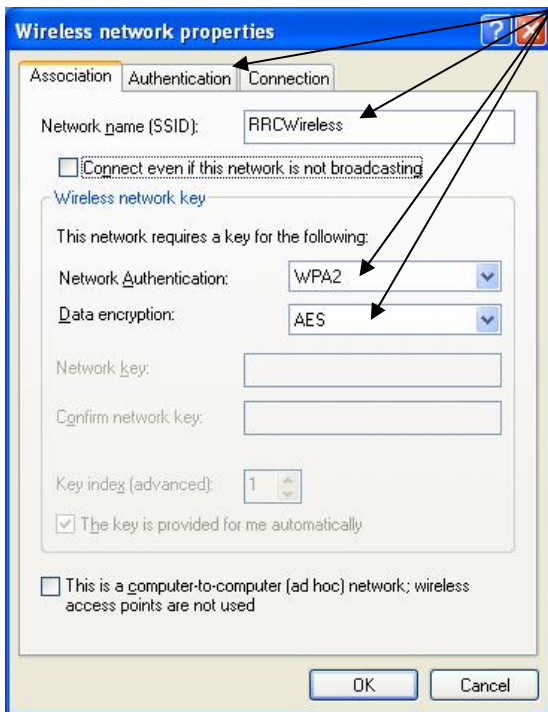


Step 5: Ensure that the SSID is set to “RRC Wireless” (case sensitive)

Ensure security type is set to “WPA2”

Ensure data encryption is set to “AES”

Click on the *Authentication* tab.

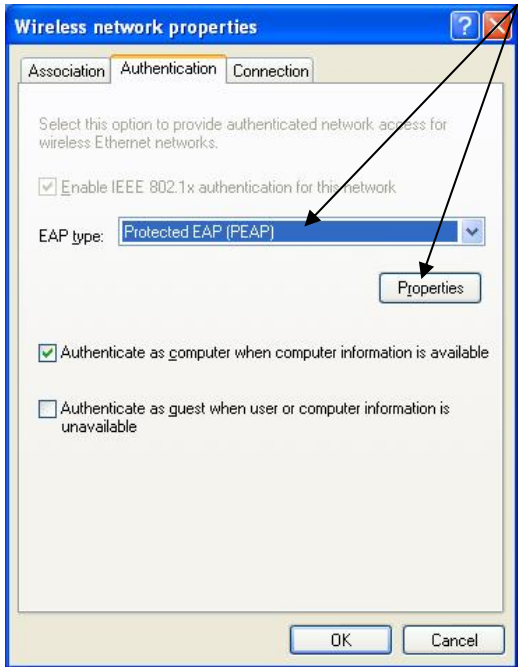


Note: If you do not have the option for WPA or WPA2, you need to update your laptop’s network card drivers. If you upgrade it, and still do not have the security options available, then your laptop is incompatible with Red River College’s network security. The drivers can be found on your laptop manufacturer’s website.

Step 6: Select “Protected EAP (PEAP)” as the EAP type

Ensure the check box beside *Authenticate as guest when user or computer information is unavailable* is unchecked

Click the *Properties* button.



Step 7: Click the checkbox beside *Validate server certificate*

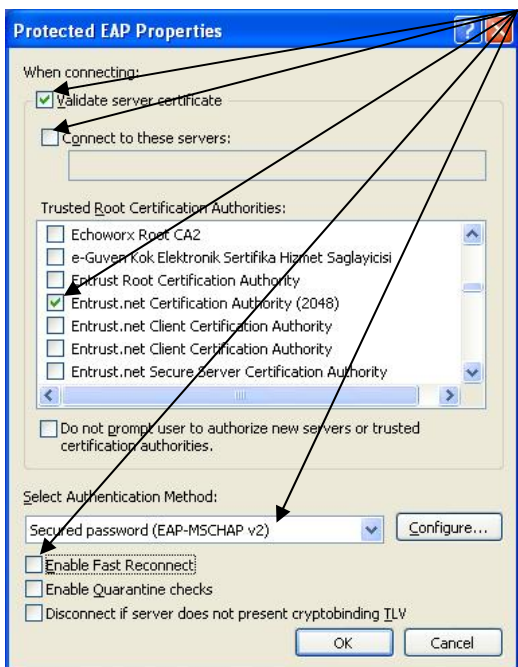
Ensure *Connect to these servers* is unchecked

Check “Entrust.net Certification Authority (2048)”

If you do not have an option for Entrust.net Certification Authority (2048) go to step 7b

Ensure Select Authentication Method shows “Secure password (EAP-MSCHAP v2)”

Click the *Configure* button.

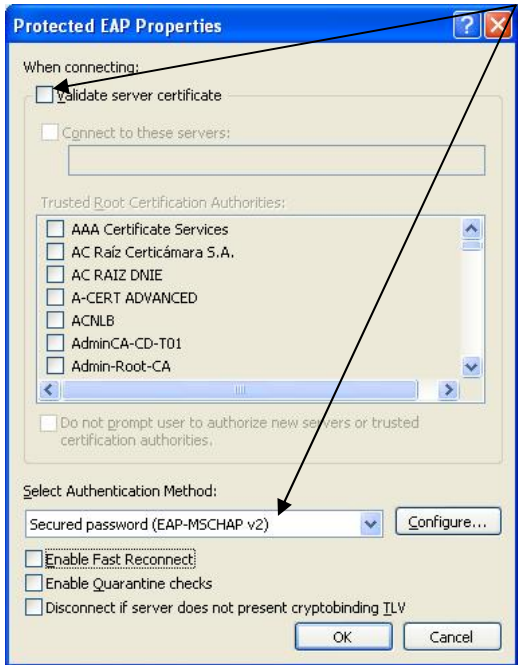


Step 7b: Ensure *Validate server certificate* is unchecked

Ensure *Enable Fast Reconnect* is unchecked

Ensure Select Authentication Method shows “Secure password (EAP-MSCHAP v2)”

Click the *Configure* button.



Step 8: Ensure “Automatically use my Windows logon name and password (and domain if any)” is unchecked

Click *OK*.



Step 9: Click the *OK* button

Click the *OK* button

Click the *OK* button

Click the *OK* button.

Step 10: In the *User name* field enter your username

In the *Password* field enter your password

In the *Domain* field, type “ACADEMIC”

Note that your username and password are the same ones you use to access the RRC network.